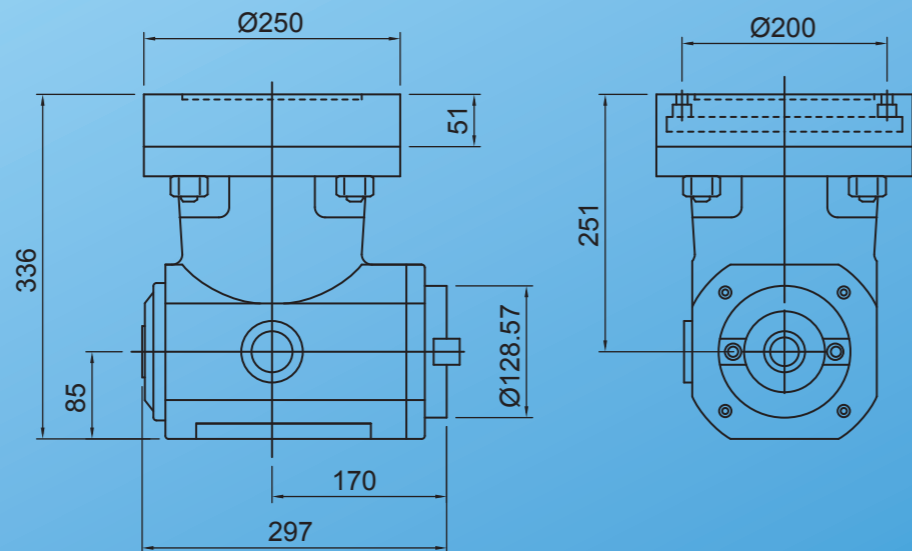
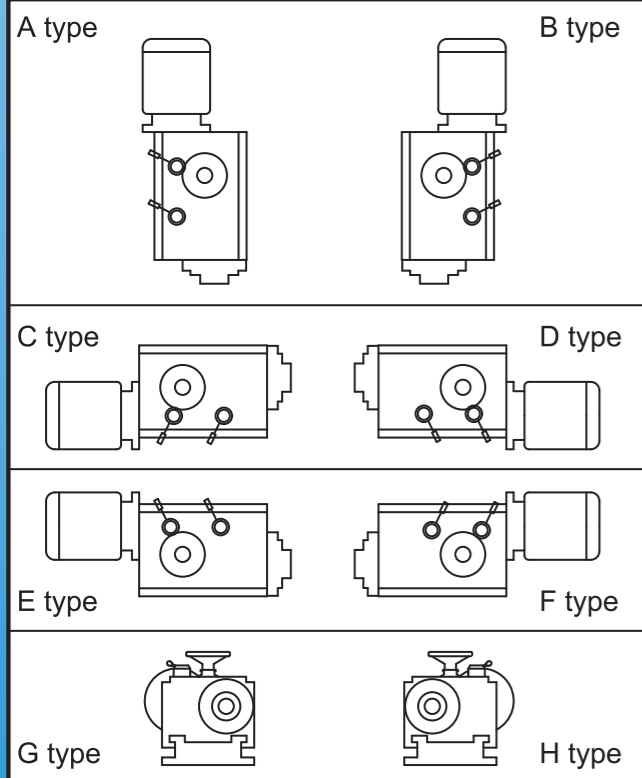


MUBS90°銑頭



MODEL SELECTION 型態選定



PRESENTATION 產品特性

1. 高剛性齒輪組適用於重切削是這些切削頭特性。
2. 本體經退火處理，消除應力後精密加工，確保品質穩定可靠。
3. 可立、臥等多種專用設計，並可加裝90°銑頭，請參考附圖(型態選定)。

1. The variable gear unit with high rigidity is suitable for heavy cutting operation as a feature of this units.
2. The machine body is manufactured under precision processing including annealing treatment and stress relief, with stable and reliable quality assured.
3. A variety of special vertical or horizontal designs are available, Angular head can also be assembled, Please refer to the pictures and diagrams (for model selection).

Elong 羿榮實業股份有限公司

工廠：台中市東區振興路284巷11號
 No.11 LANE 284. CHEN HSIN ROAD, EAST DISTRICT TAICHUNG, TAIWAN R.O.C.
 TEL : +886-4-22127979 FAX : +886-4-22137979
<http://www.milling-head.com>
 E-mail:timlin3@ms71.hinet.net 統一編號：84204485

經銷商：

羿榮 Elong

Milling Unit

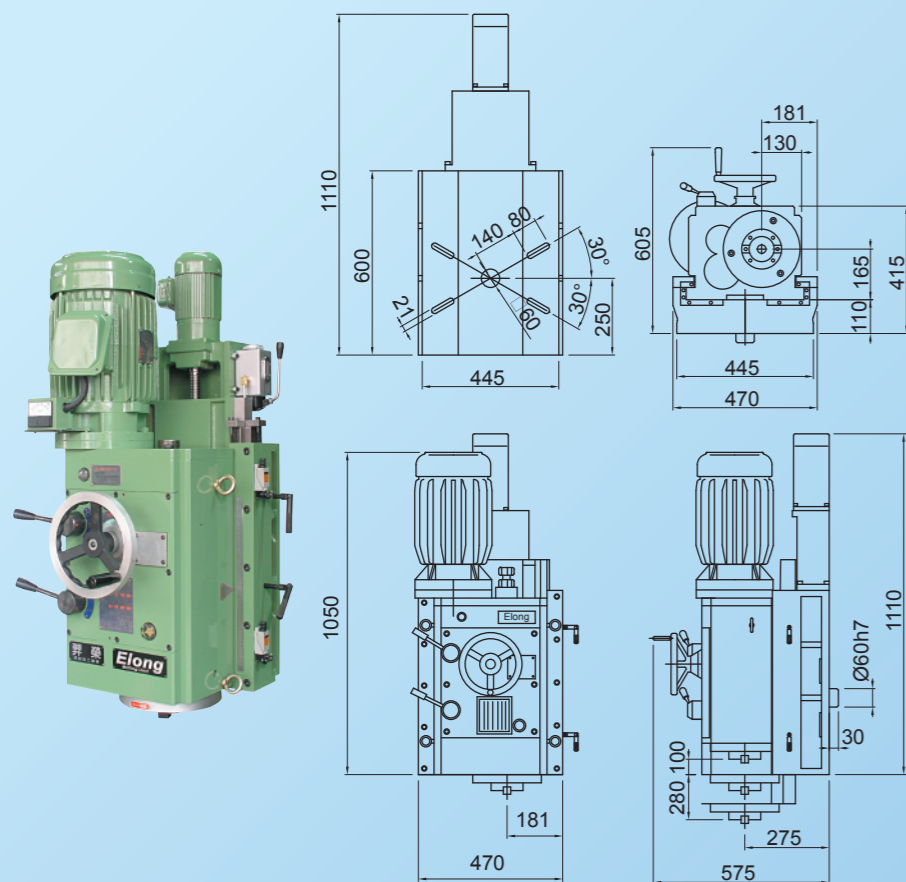
高效率變速銑削頭

High effectively position variable gear Milling unit



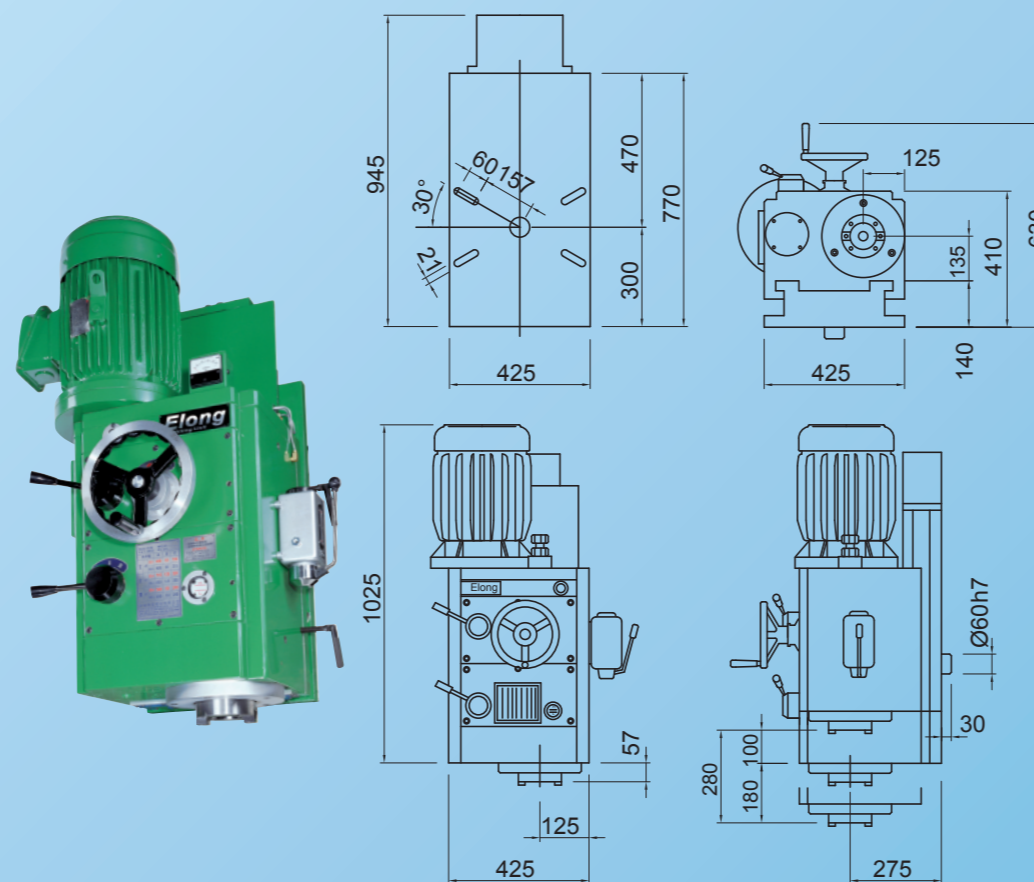
六段速、九段速
 切削低震刀、高穩定度
 增加工作產能
 提升機台設備價值

封面為應用實例(example)



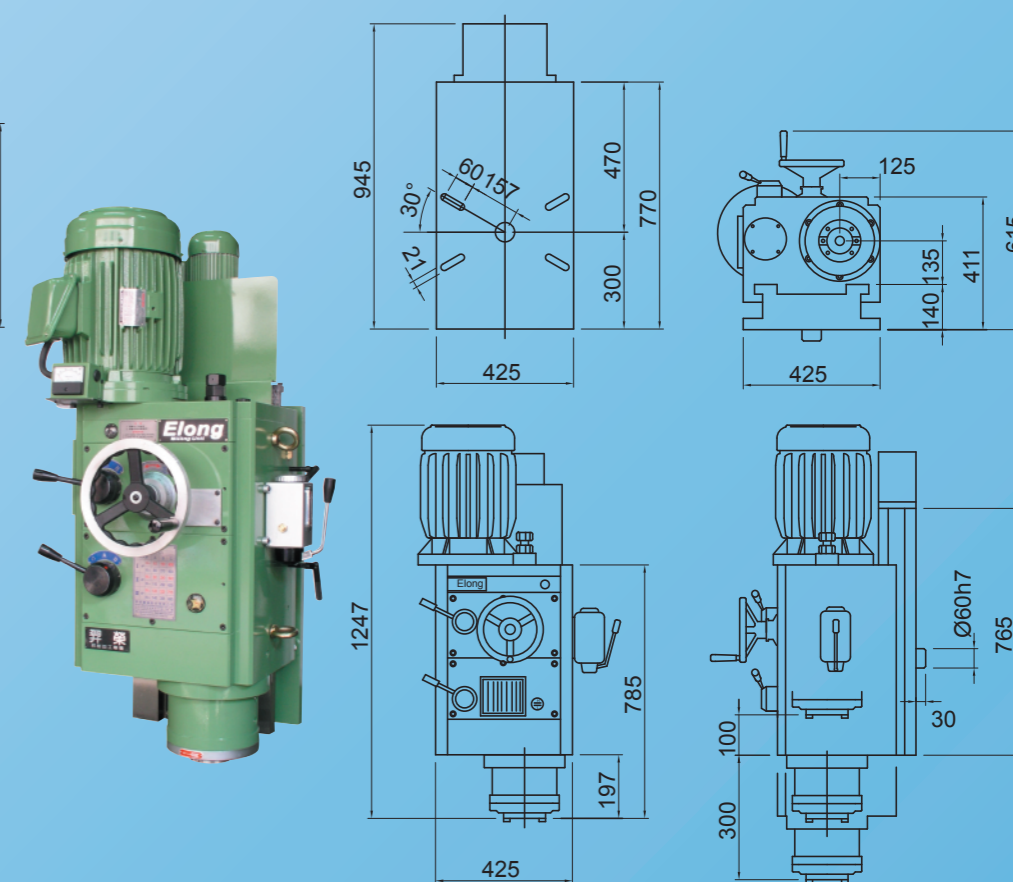
MU6S-EH1 \ 左銑型 Left Milling Type

- 12.5HP馬達 ■銑刀最大直徑 ϕ 200mm
- 12.5HP motor ■Max diameter of cutter ϕ 200mm



MU9S-A1 \ 右銑型 Right Milling Type

- 15HP馬達 ■銑刀最大直徑 ϕ 250mm
- 15HP motor ■Max diameter of cutter ϕ 250mm



MU9S-LN \ 右銑型 Right Milling Type

- 20HP馬達 ■銑刀最大直徑 ϕ 200mm 氣壓鎖刀
- 20HP motor ■Max diameter of cutter ϕ 200mm

規格 SPECIFICATIONS

項目 ITEM	型號 MODEL	MU6S-EH1	MU9S-A1	MU9S-LN	特別附件
主軸馬達 Spindle motor		7.5kw (10Hp) 9.3kw (12.5Hp)	9.3kw (12.5Hp) 11kw (15Hp)	11kw (15Hp) 15kw (20Hp)	1. 氣動拉刀裝置 2. 90°銑頭 3. 進刀馬達
主軸孔錐度 Taper of spindle nose		ISO 50 (7:24)	ISO 50 (7:24)	ISO 50 (7:24)	
主軸端外徑 Diameter of spindle nose		ϕ 128.57mm	ϕ 128.57mm	ϕ 128.57mm	
主軸變速段速 Stpps of spindle speeds		6段 (section)	9段 (section)	9段 (section)	
主軸轉速 Speed of spindle (R.P.M) (另有高速選配)		4P 50 C/s 75, 115, 165, 240, 345, 505 4P 60 C/s 93, 135, 200, 295, 415, 615	4P 50 C/s 65, 90, 120, 180, 240, 320, 400, 540, 715 4P 60 C/s 80, 110, 145, 215, 290, 385, 485, 650, 865		
銑刀最大直徑 Max diameter of cutter		200 mm	250 mm	250 mm	
AC快速馬達 Rapid travel AC motor		1/4HP \times 1/30	1/4HP \times 1/30	1/4HP \times 1/30	
快速馬達 Rapid travel speed		50 C/s, 280 mm/min 60 C/s, 350 mm/min			
全行程 Full Travel		390 mm (如圖)	280 mm	400 mm	
手輪迴轉 Reversal alide		3 mm/rev	3 mm/rev	3 mm/rev	
重量 Weight		490 kg	570 kg	590 kg	

本型錄規格及尺寸僅供參考，若有變更恕不另行通知